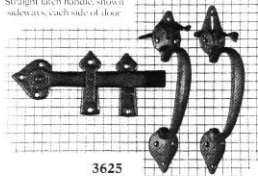


GATE LATCHES

Straight latch handle, shown sideways, each side of door

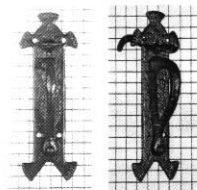


3625

Latch 8"

Handle 9"

Lever Length 2 $\frac{1}{2}$ " and 1 $\frac{1}{8}$ "

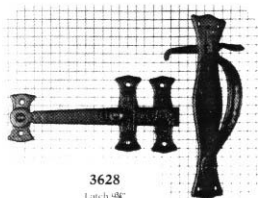


3630

Handle 7 $\frac{1}{2}$ " x 2 $\frac{1}{2}$ "

Lever Length 3"

Compare Pull M 3630
Section "Pulls"

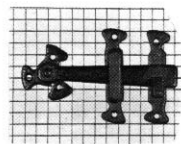


3628

Latch 9 $\frac{1}{2}$ "

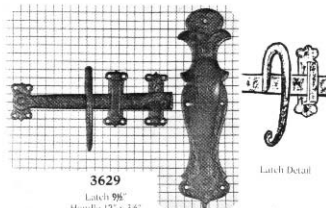
Handle 10 $\frac{1}{4}$ " x 2 $\frac{1}{8}$ "

Lever Length 3"



Latch 6"

For 3630 above and 3631 below



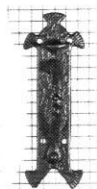
3629

Latch 9 $\frac{1}{2}$ "

Handle 12" x 3 $\frac{1}{4}$ "

Lever Length 4-1/2" When ordering specify AP (as pictured) or OP (opposite)

Latch Detail



3631

Twisted Handle 7 $\frac{1}{2}$ " x 2 $\frac{1}{2}$ "

Lever Length 3"

Compare Pull M 3631
Section "Pulls"